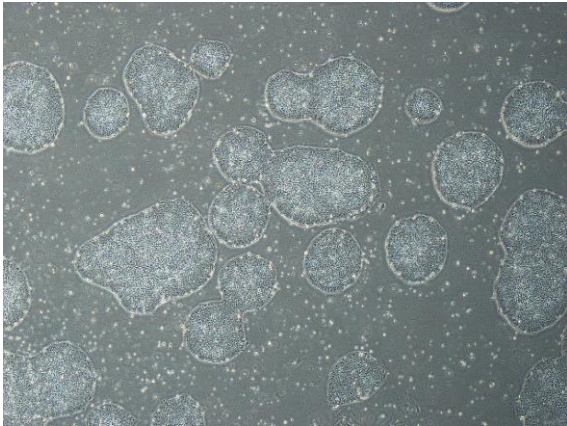
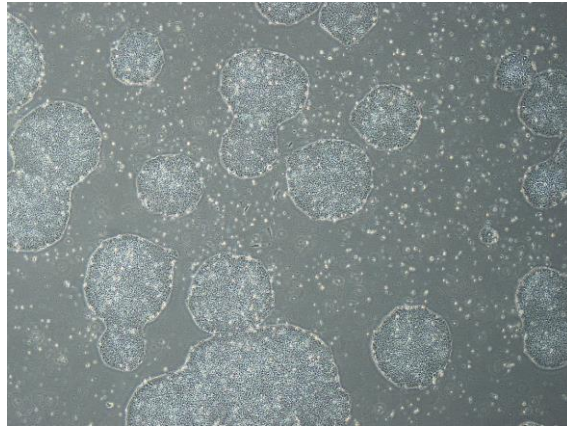


【 CiRA-j-1319 】 Morphology of iPSC colonies

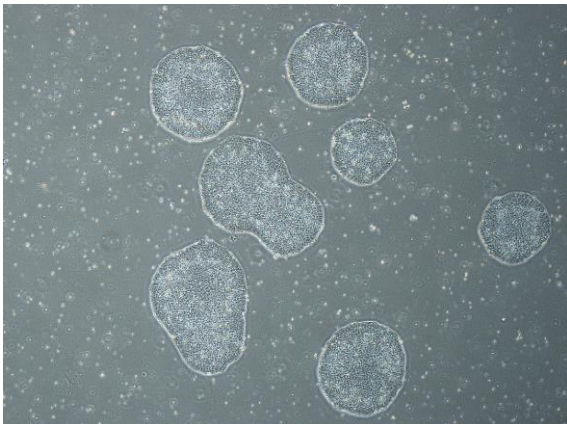
CiRA-j-1319-A: passage-3



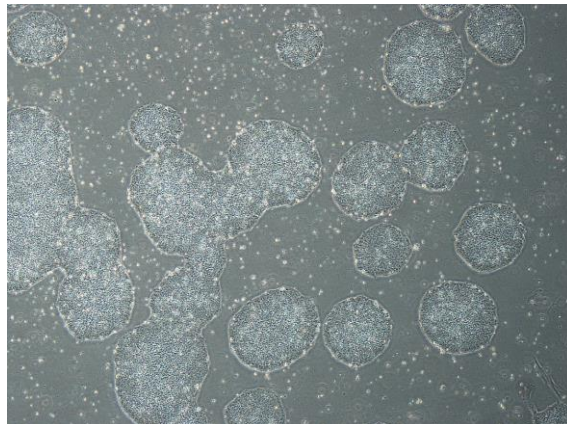
CiRA-j-1319-B: passage-3



CiRA-j-1319-C: passage-3



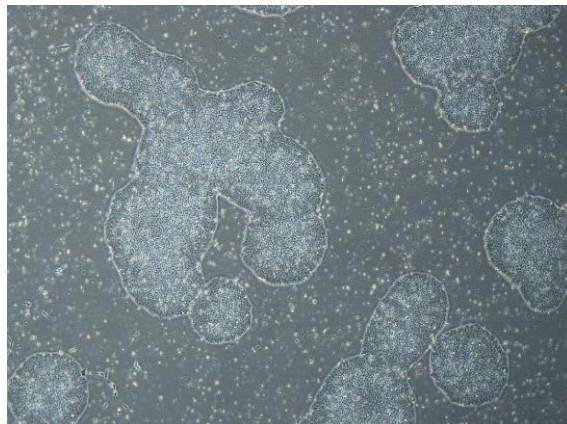
CiRA-j-1319-D: passage-3



CiRA-j-1319-E: passage-3



CiRA-j-1319-F: passage-3



(All images were captured at 4x magnification)